

# PRE-ENGINEERED CHEMICAL METERING SYSTEMS

## Pre-Packaged & Self-Contained Chemical Feed Systems



PP-2H Dual Pump System with NEMA 4x Controllers

### SPECIFICATIONS

- Single and Multiple Pump Configurations
- Panel Material: Polypropylene or Fiberglass
- Process Piping Material: PVC
- Process Connections: 1/2" NPT
- Dimensions: 55"H x 33"W x 23"D
- Weight (PP-2H shown): 130 Lbs. (w/pumps)
- Power: 115 VAC

### OPTIONAL EQUIPMENT

- Multi-Function Controller
- Flowmeters
- Tubing Rupture Detection
- Supply Tank Level Monitoring
- Tanks
- On-Line Analyzers
- Corp Stops with Solution Tube Assembly

### FEATURES

- Suitable for base or wall mounting
- Integral leak containment with optional tubing rupture detector with relay output that can start a back-up pump and/or signal an operator remotely via an autodialer
- Rugged industrial TEFC motors
- Seal-less pumping technology
- Self-priming – suction lifts to 30 ft.
- No check valves – few moving parts

### STANDARD EQUIPMENT

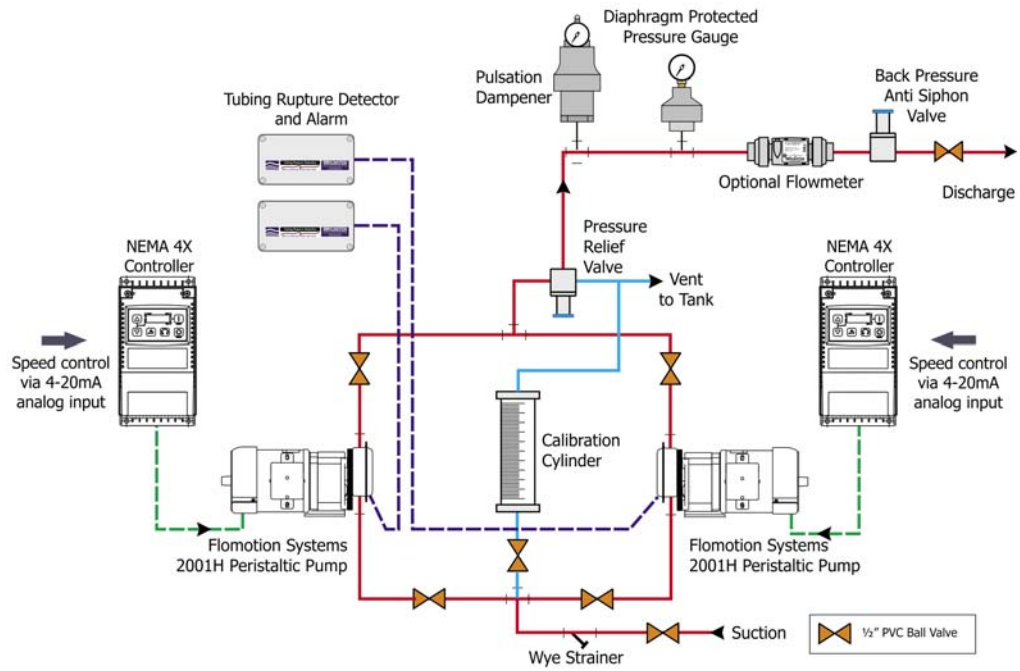
- FLOMOTION SYSTEMS Peristaltic Pump with NEMA 4x Controller
- Back pressure and Pressure Relief Valves
- Calibration Cylinder
- Pulsation Dampener
- Diaphragm Protected Pressure Gauge
- Suction Wye Strainer
- PVC Ball Valves
- Leakproof Tubing Connectors



Available with electromagnetic flow meter & alarm system

**CHEMICAL FEED SYSTEMS**

## TYPICAL SYSTEM DIAGRAM



**FLOMOTION SYSTEMS Inc.**  
 165 Creekside Drive, Suite 112  
 Buffalo NY 14228-2103  
 Tel: 800-909-FLOW (3569)  
 Tel: 716-691-3941  
 Fax: 716-691-1253  
 Email: [info@flomotionsystems.com](mailto:info@flomotionsystems.com)  
[www.flomotionsystems.com](http://www.flomotionsystems.com)

